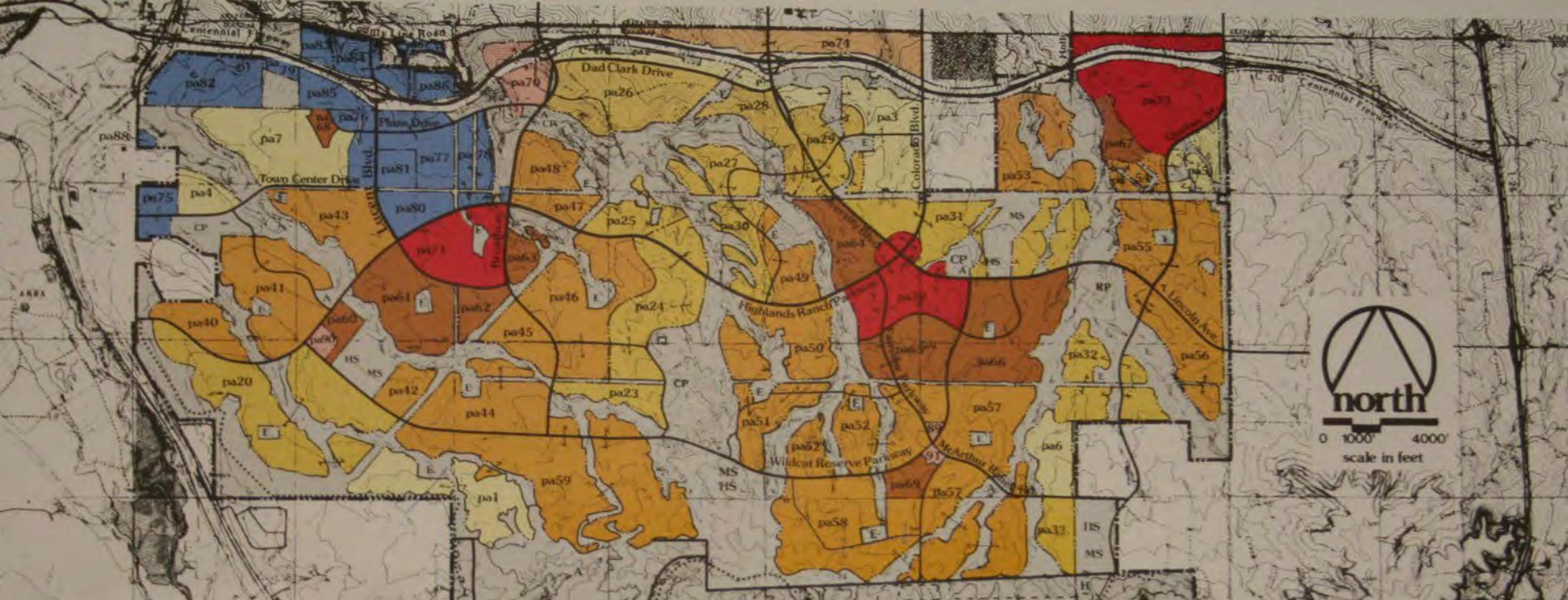




HIGHLANDS RANCH COMMUNITY ASSOCIATION
B A C K C O U N T R Y
W I L D E R N E S S A R E A





Development Plan

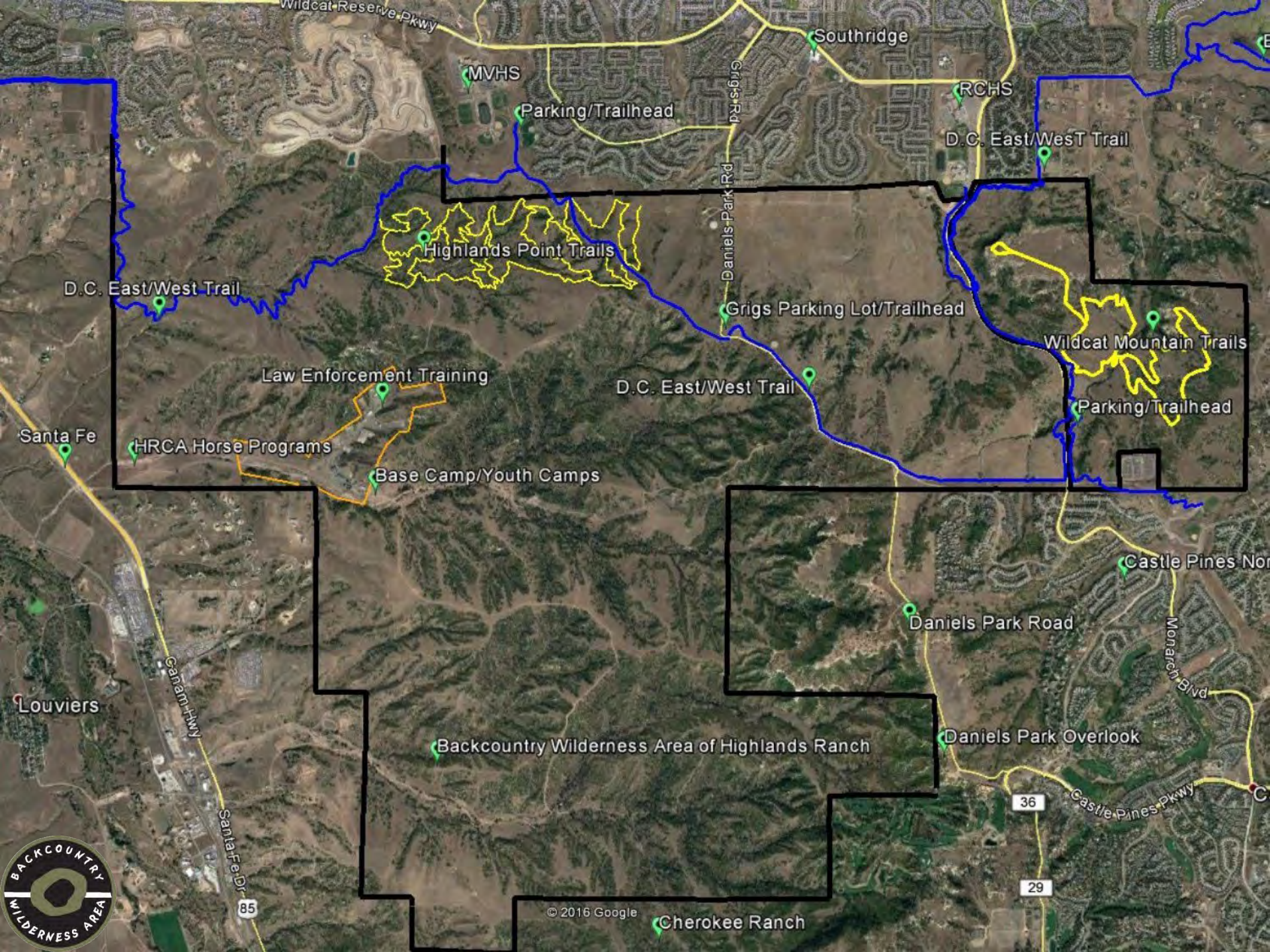
- Urban Uses Residential**
- pa1-7 Low Density 2.0 DU/GRA
 - pa8-33 Medium-Low Density 4.0 DU/GRA
 - pa34-59 Medium Density 5.0 DU/GRA
 - pa60-88 High Density 8.0-15.0 DU/GRA
- Nonresidential**
- pa70-71 Community Activity Center
 - pa72 Town Center
 - pa73-74 Corridor Activity Center
 - pa75-76 Business/Industrial Park
- Circulation**
- Centennial Freeway (C-470)
 - 2 Lane Arterial
 - 4 Lane Arterial
 - 6 Lane Arterial
 - N-Ride Transit Parking Site

- Nonurban Uses**
- Nonurban
 - E¹ Elementary School
 - MS² Middle School
 - HS³ High School
 - CP Community Park
 - RP Regional Park
 - L Library
 - A Highlands Ranch Community Association Facility
 - Hiking/Biking Trail

¹Planning Area
²Dwelling Unit /Gross Residential Acre
³Schools



January 2005



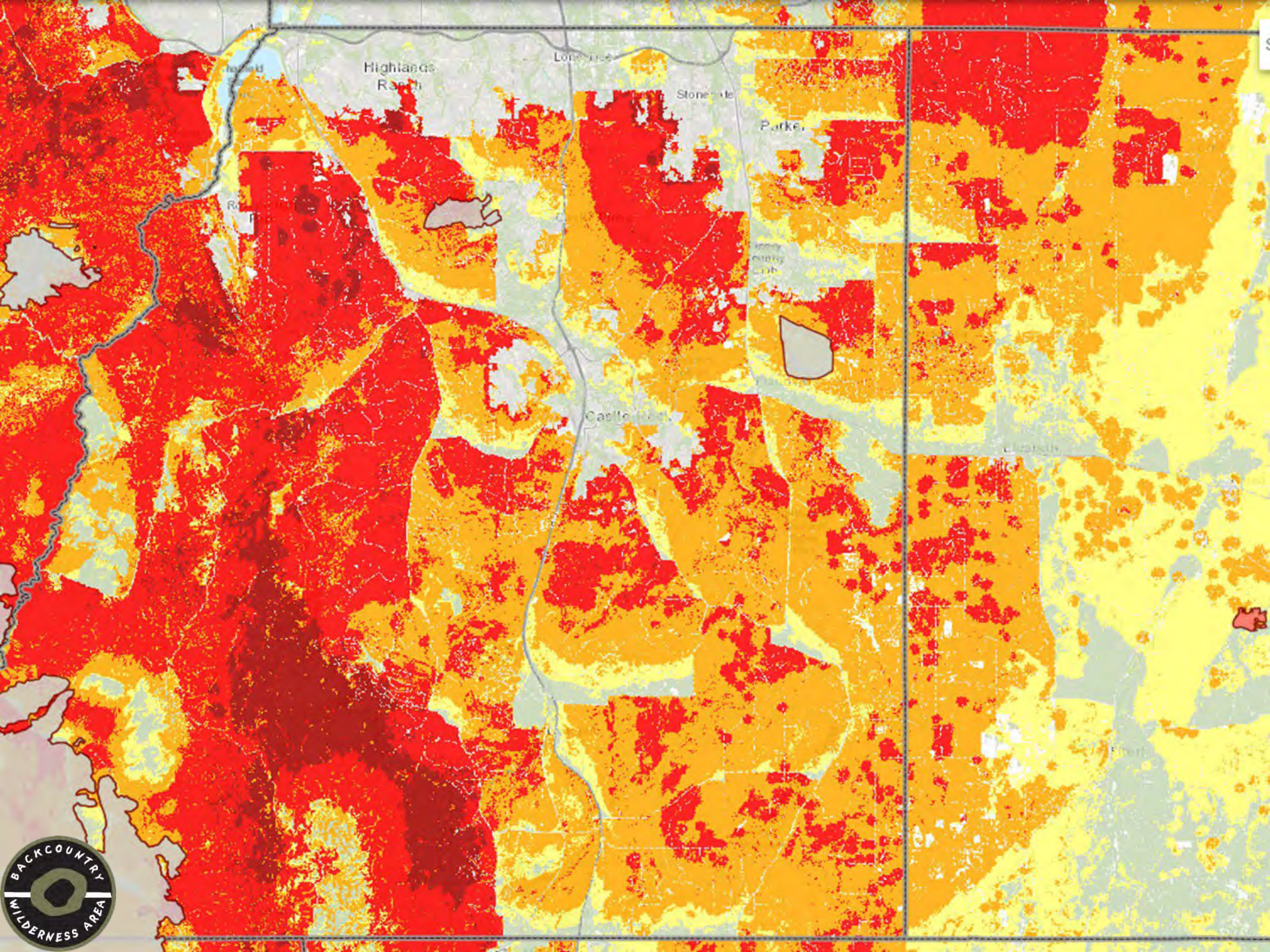
© 2016 Google

Cherokee Ranch









Douglas County Wildfire Risk

- 82% of Douglas County in High Risk
- #1 Natural Disaster Threat for D.C. Residents



Fortunately

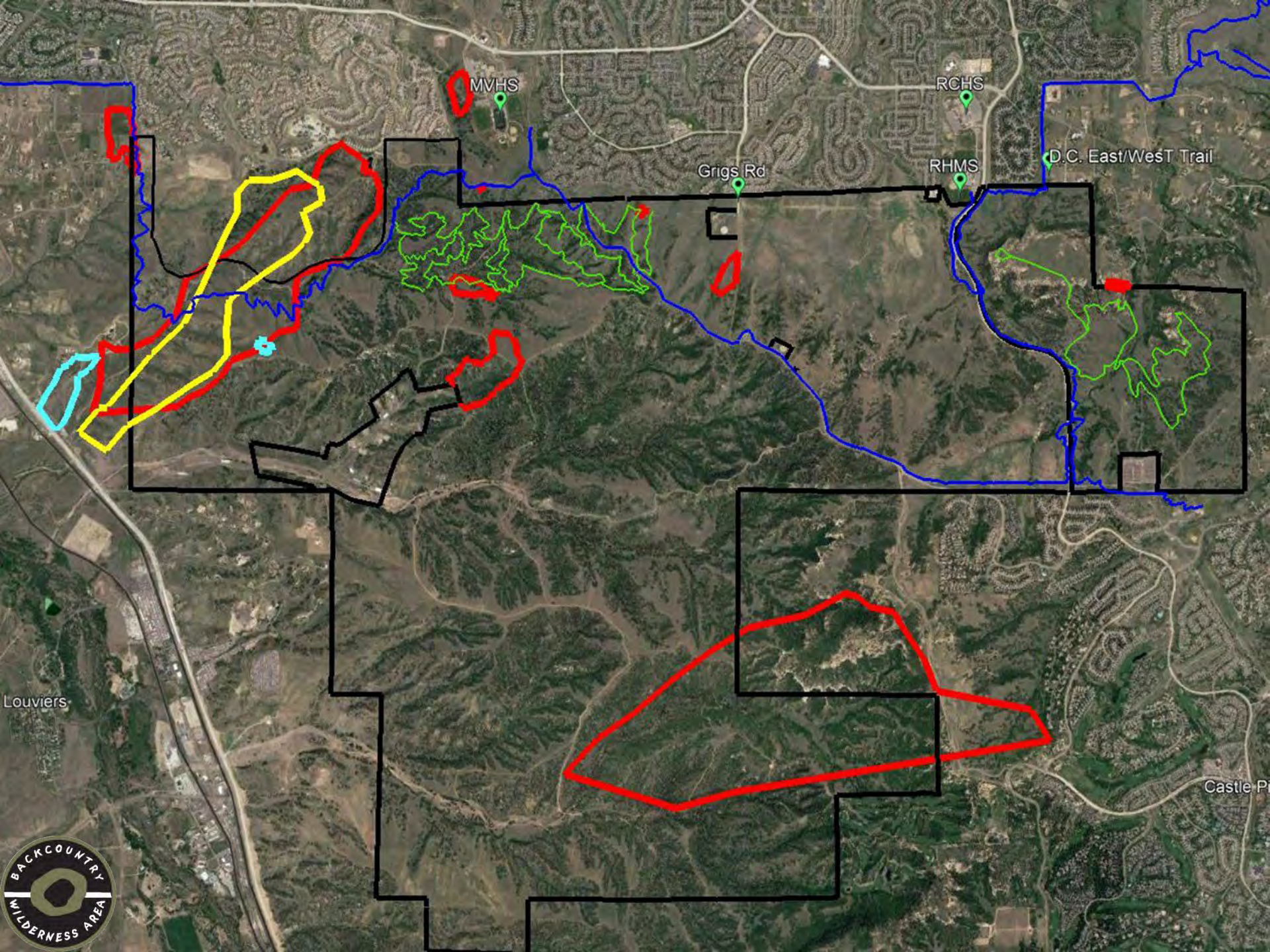
- Douglas County Is Very Capable
 - USFS
 - CSFS
 - Denver Watershed
 - CO Department of Natural Resources
 - Douglas County Wildfire Specialist
 - Douglas County Operations of Emergency Management
 - Numerous Fire Districts



Douglas County Wildfire Partnership

- Initiated by Douglas County and CSFS
- Conference early February
- GOALS
 - Increase collaboration
 - Improve communication/coordination
 - Promote public awareness to foster community driven action
 - Multi-level planning and implementation





MVHS

RCHS

Grigs Rd

RHMS

D.C. East/West Trail

Louviers

Castle P



What Are We Already Doing...

- As a large landowner in the Urban/Wildland Interface, we have a big responsibility
- We have been doing major work since 2018
 - Risk, Response, Mitigation



What Are We Already Doing...

- Work closely with the experts:
 - SMFR, OEM, CSFS, Insurance
- I am Wildland Certified
 - Working knowledge for Risk/Response/Mitigation
- Emergency Procedures, Evacuation, Staff Roles/Responsibilities
 - Camp/Program Evacuation, Trails/Archery Ranges, Staff, Livestock



RISK, RESPONSE, MITIGATION

- Our Main Goals:
 - Prevent Catastrophic Habitat Loss
 - Increase safety to firefighters, staff, customers
 - Increase efficiency of response
 - Stop a fire before it becomes a threat to homes and critical habitat

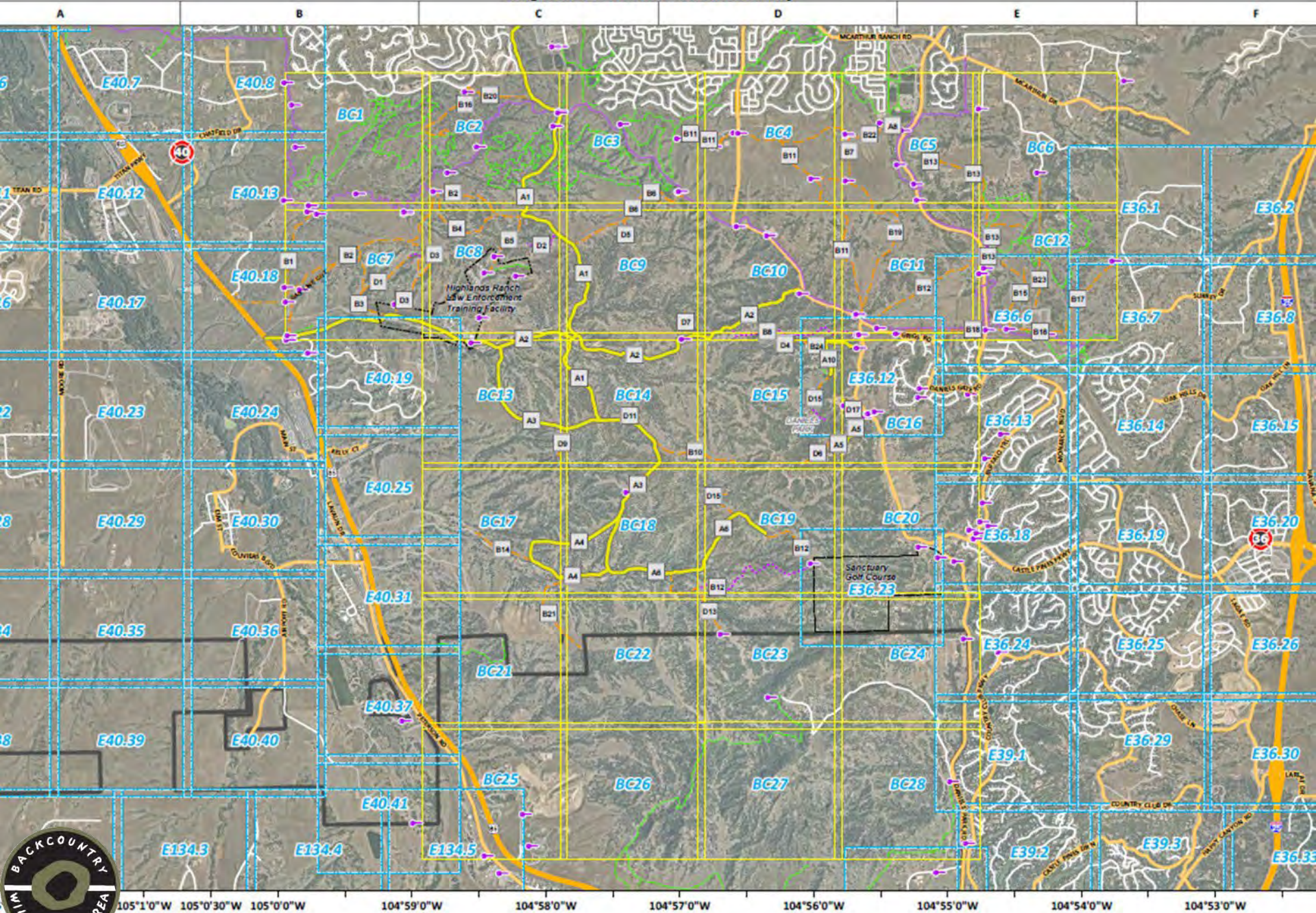


RESPONSE

- All of previous slides are about Risk
 - We know we are at risk
- RESPONSE
 - Relationships and Cooperation
 - SMFR, D.C. OEM
 - IGA, Mutual Aid, etc.
 - D.C. –contracted helicopter
 - Calls other State/Federal Resources








Highlands Ranch Backcountry

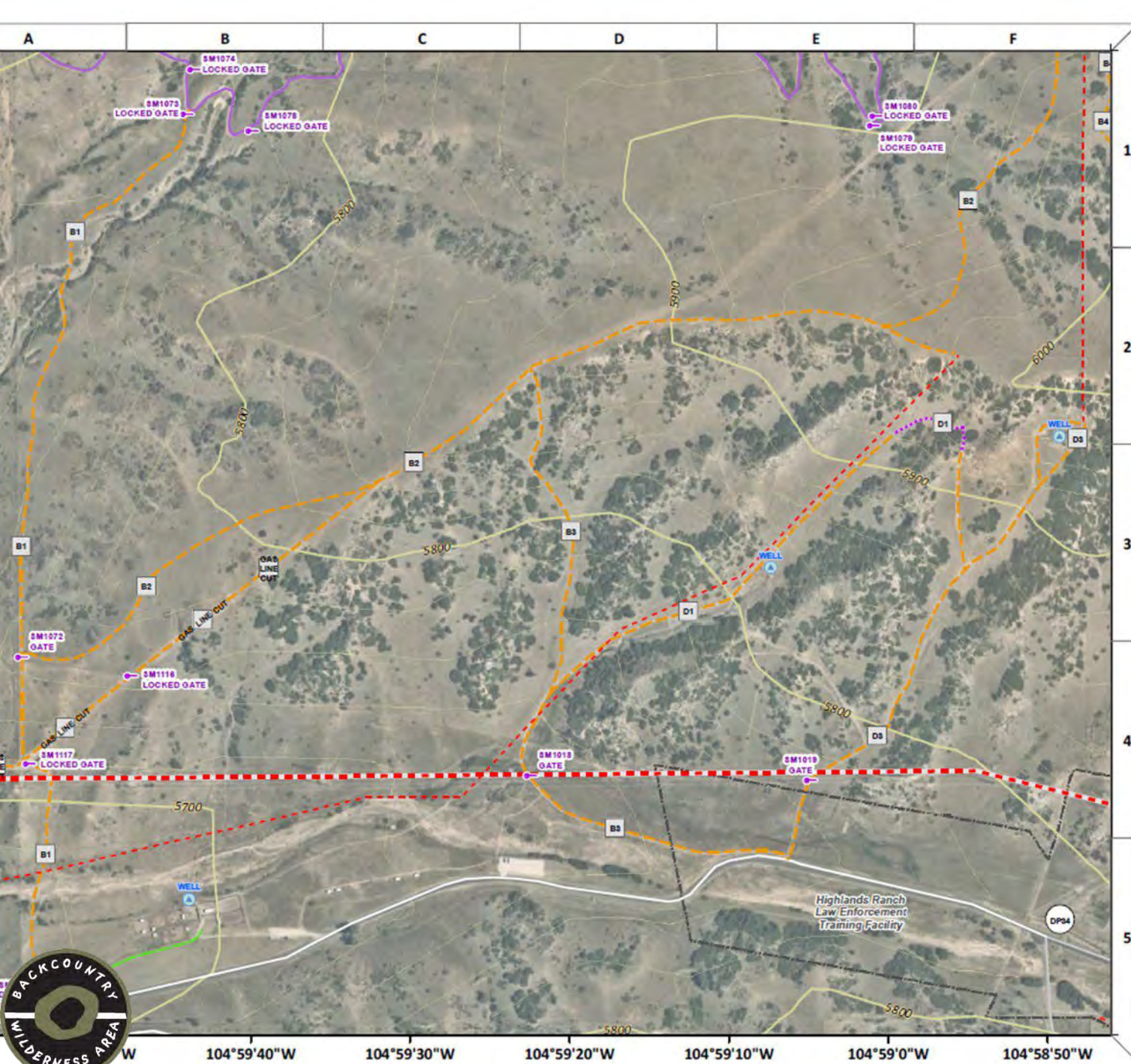


105°1'0"W 105°0'30"W 105°0'0"W 104°59'0"W 104°58'0"W 104°57'0"W 104°56'0"W 104°55'0"W 104°54'0"W 104°53'0"W

Tactical Map BC7

1:5,810

-  IMPROVED ROAD
-  UNIMPROVED
-  DC TRAIL
-  ATV ONLY
-  FOOT TRAIL



			Fire Station
			Hydrant
			Target/Known Hazard
			Dip Site

0 550



A
3



RESPONSE...

- Map
 - Better Communication Resulting In
 - Increase in Safety, Efficiency
- Training
 - Familiarity
 - Fuels, Routes, Challenges, Gates, Safety Zones
- Roles/Responsibilities
 - Safety Zones/Evacuation Routes, Staff Roles



A
3





MITIGATION

- FUEL MANAGEMENT
- Many Different Forms
 - Weeds
 - Oak clearing
 - Forest/Tree Management





















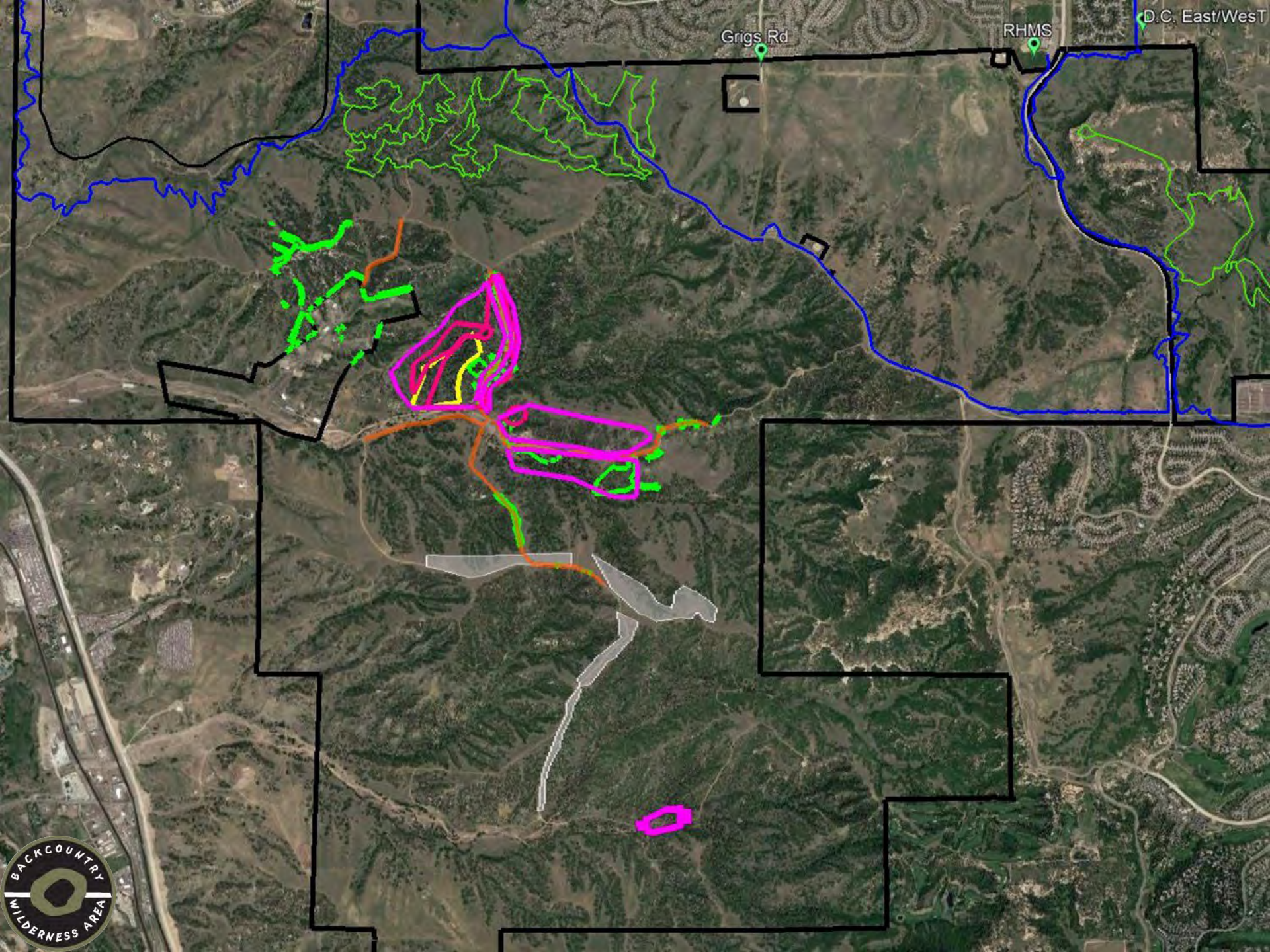










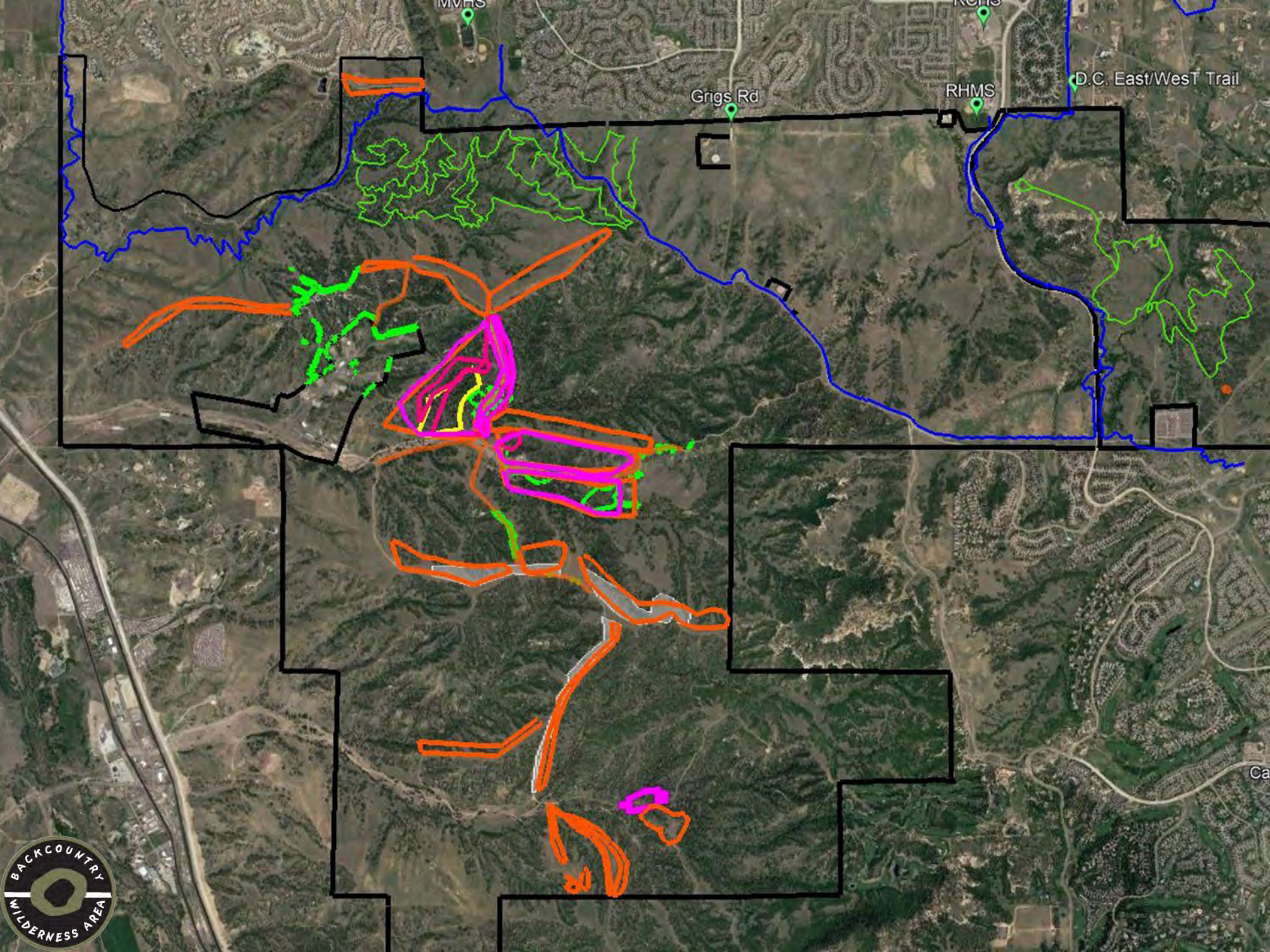


Grigs Rd

RHMS

D.C. East/West





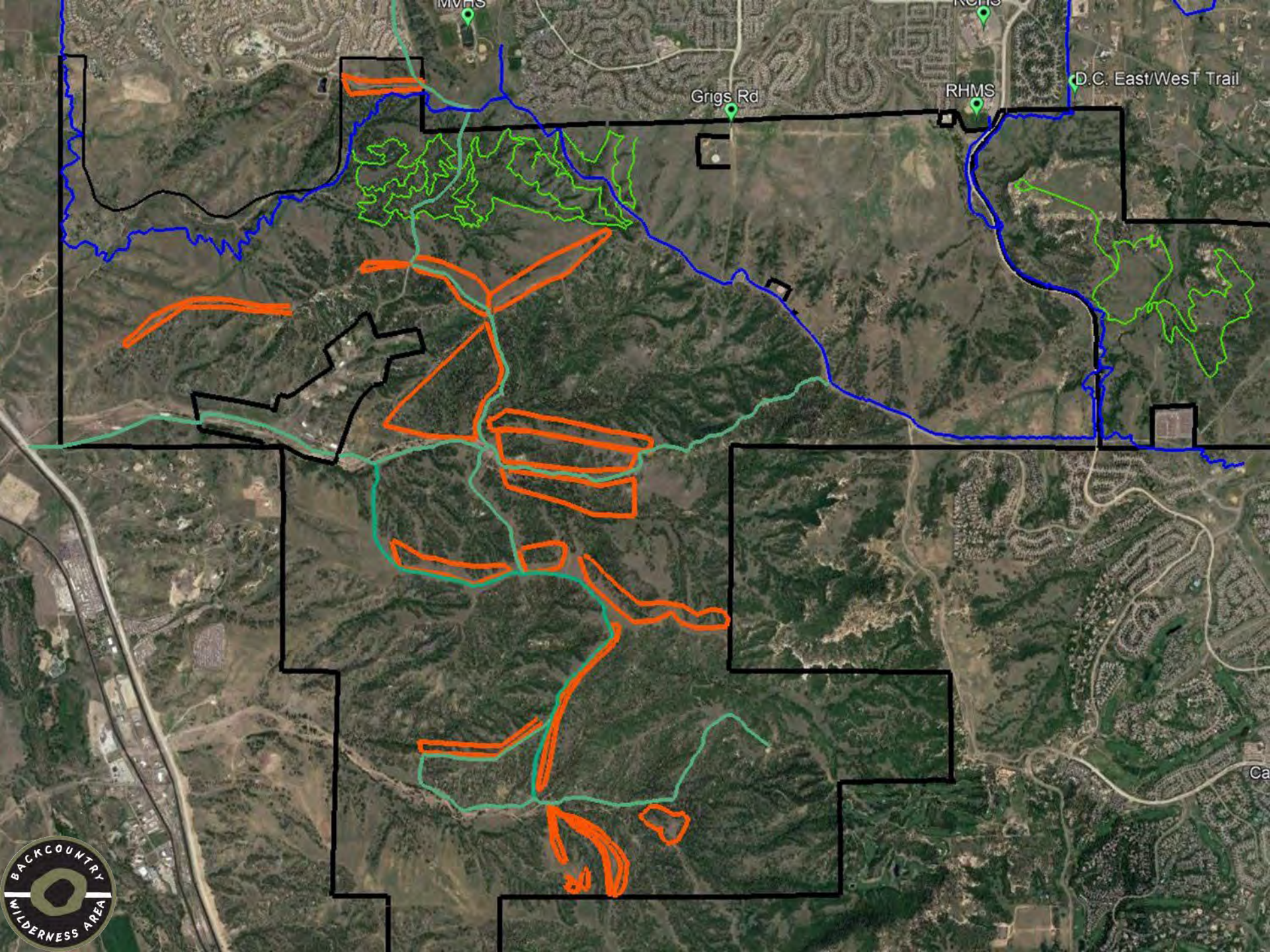
MVHS

Grigs Rd

RHMS

D.C. East/West Trail





MVHS

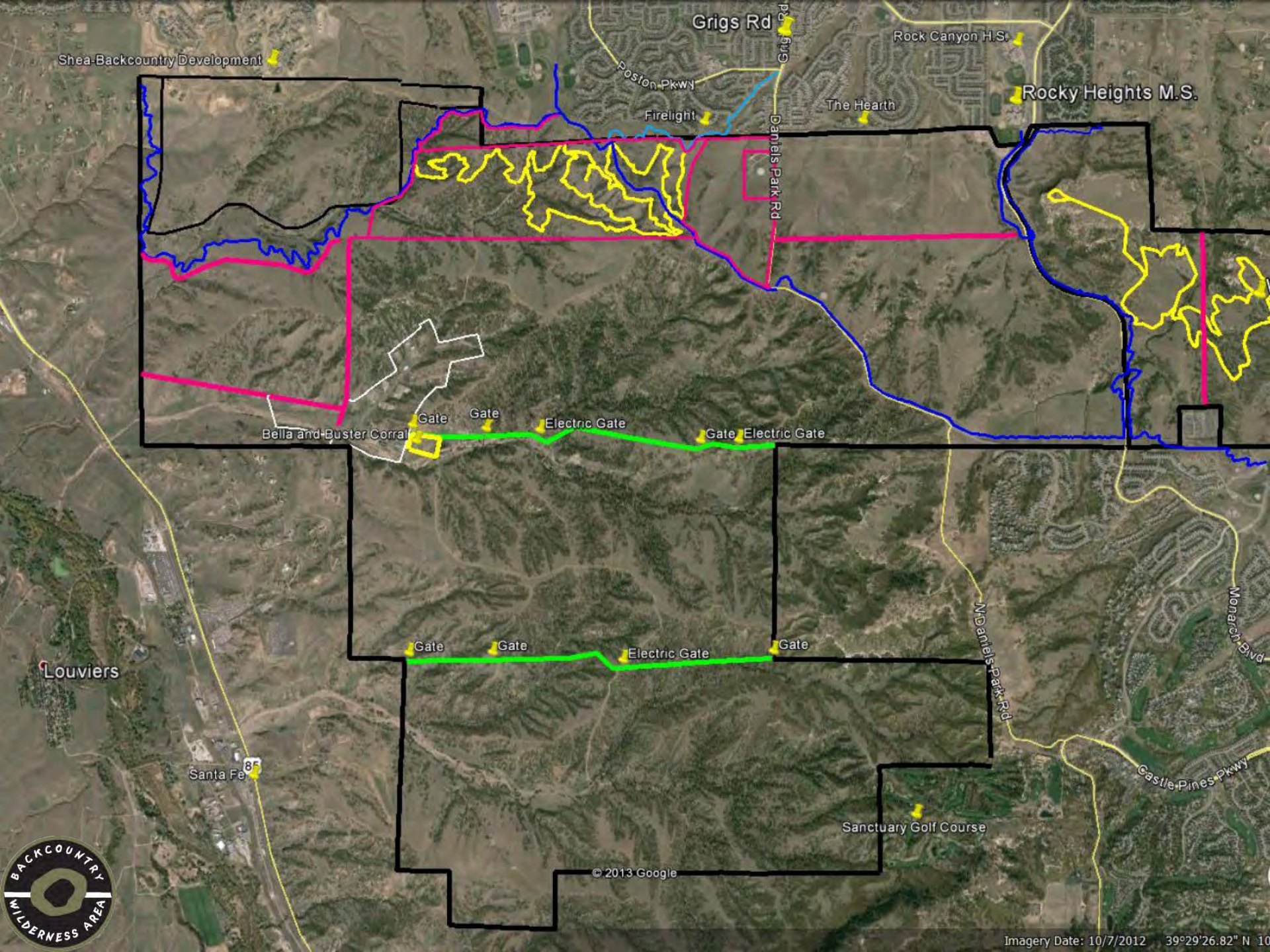
Grigs Rd

RHMS

D.C. East/West Trail







Shea-Backcountry Development

Grigs Rd

Rock Canyon H.S.

Rocky Heights M.S.

Poston Pkwy

Firelight

The Hearth

Daniels Park Rd

Bella and Buster Corral

Gate

Gate

Electric Gate

Gate

Electric Gate

Gate

Gate

Electric Gate

Gate

Louviers

Santa Fe 86

Sanctuary Golf Course

Daniels Park Rd

Monarch Blvd

Castle Pines Pkwy



© 2013 Google

Imagery Date: 10/7/2012 39°29'26.82" N 107°10'10.00" W

Wildlife and Habitat are 1st Priority







55 °F 12 °C



09-15-2019 07:30:13



Stop the Spark

- Our Behaviors
 - Camp Fires
- Public Awareness
 - Red Flag Days
- XCEL
 - After the Paradise Fire in CA...have been inspecting and replacing poles throughout the Backcountry



















